



**bomaksan**<sup>®</sup>  
INDUSTRIAL AIR FILTRATION SYSTEMS



**ECO SERIES**

**JET-PULSE COMPACT CARTRIDGE TYPE  
DUST COLLECTOR**



# GENERAL FEATURES



## PLUG & PLAY

Bomaksan branded ECO Series Jet-Pulse Dust Collector takes up less place thank to its' compact design. It is a plug&play device that contains all accessories on its own.



## ECONOMICAL

Bomaksan branded ECO Series Jet-Pulse Dust Collector decreases your installation expenses thanks to its easy setup and your air duct expenses due to its special design suitable to work indoors.



## DURABLE & LEAK-PROOF

Side and upper doors of cabin, makeup profile, chassis and carrying legs are produced with sufficient plate thickness and leak-proof is ensured by press inflection unifying with a nut.



## SILENT

Bomaksan branded ECO Series Jet-Pulse Dust Collector enhances the air quality of your factory without reasoning noise pollution thanks to its' specially designed integrated silencer box



## AUTO CLEANING

In BOMAKSAN brand Jet-Pulse filter units, compressed air cleaning works on the basis of differential pressure. In this way, the filters are cleaned only when necessary and the compressed air consumption is reduced.



## EASY MAINTENANCE

Bomaksan branded ECO Series Jet-Pulse Dust Collector decreases your time and labor cost thanks to its panel filter elements and custom-engineered dust bin.

## APPLICATIONS



Metalworking



Pharmaceutical



Food



Plasma/Laser Cutting

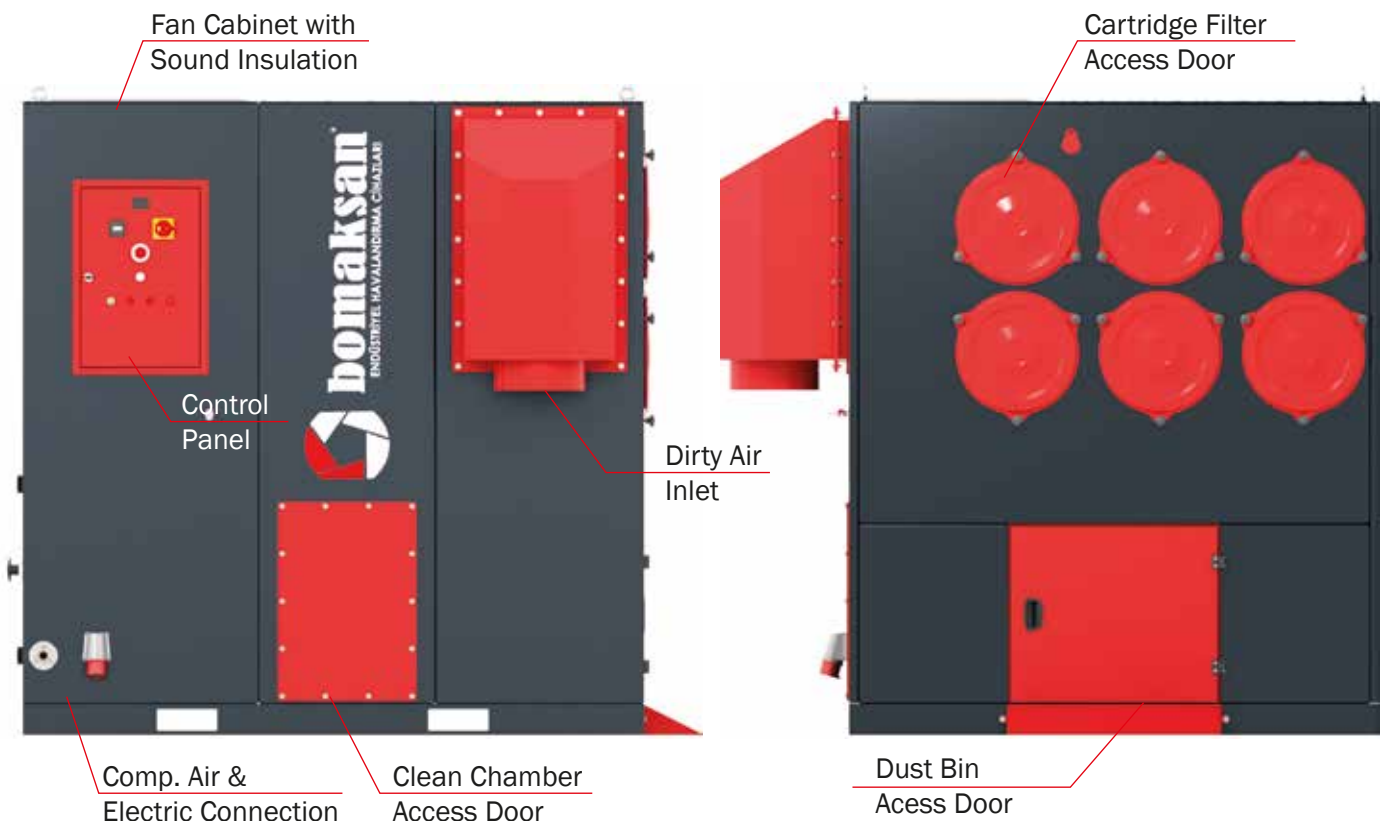


Powder Coating



Welding

## HIGHLIGHTS

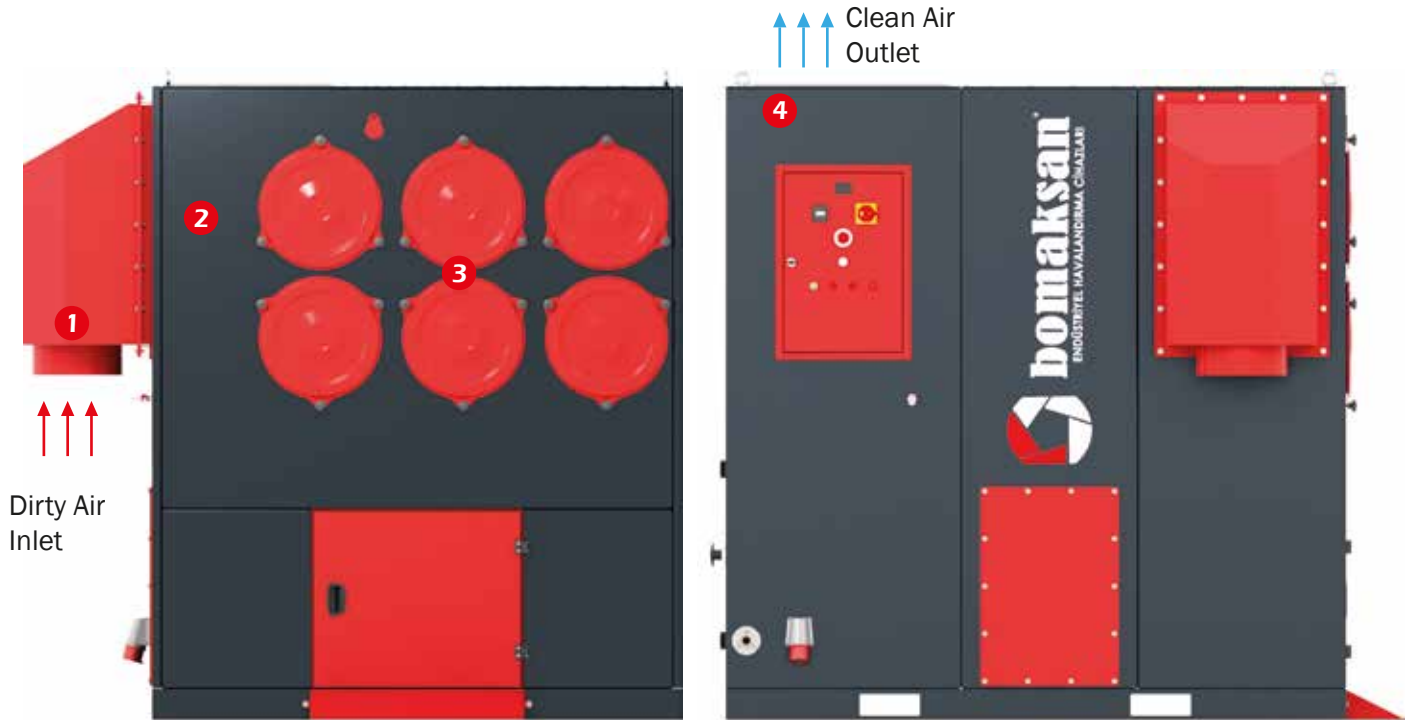


# HOW IT WORKS?



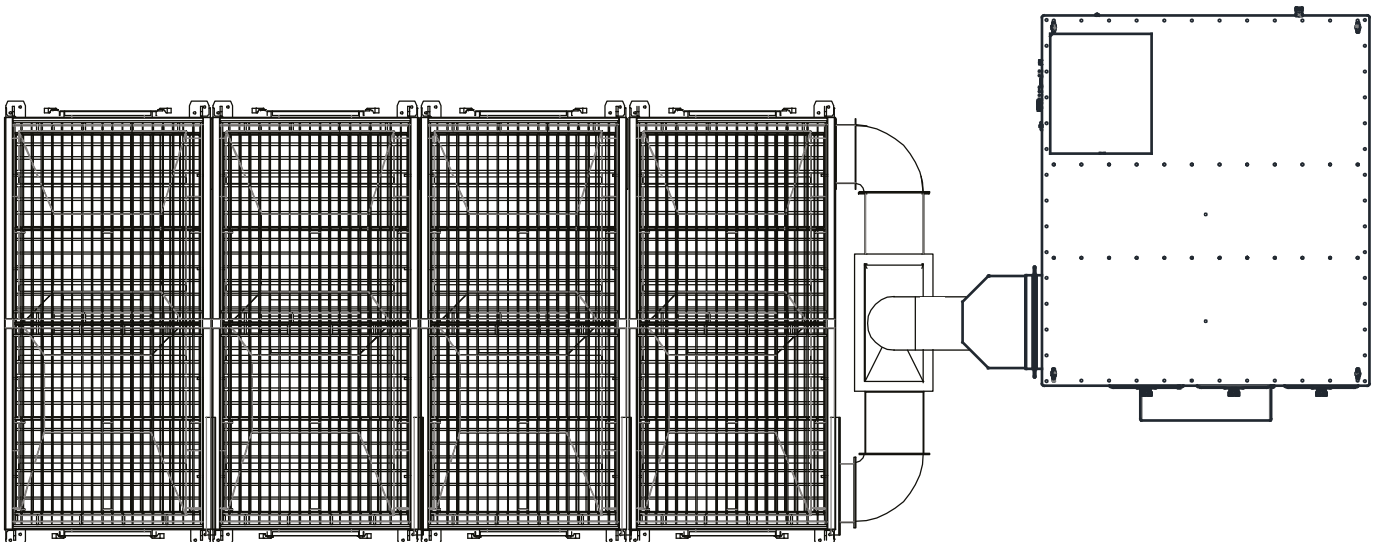
## PLUG&PLAY DEVICE

Bomaksan branded ECO series Jet-Pulse Cartridge Filter Units are able to be shipped as pre-installed due to its special designed dimensions. This design advancement allows us to pre-set each start-up settings and all you need to plug all air connections, electrical connections and start running your device.



- 1 Dirty air comes into inlet with proper sized duct.
- 2 Integrated spark arrestor protect cartridge filters and filter unit from abrasive particle and reduces fire risk by capturing sparks.
- 3 Dirty air is filtering by high efficient cartridge filters.
- 4 Clean air released to the ambient via super silent fan

## SAMPLE INSTALLATION



## STANDARD ACCESSORIES

### ● RADIAL FAN

Targeted to satisfy requested flow and pressure, centrifuge type, conforming the standards and with its' direct drive motor its' produced to work quite and vibration free. Fan motor are made by steel as standard and balanced dynamically and statically on specialized plants.



### ● PULSE-VALVE AND HEADER TANK

Pulse Valves are made by aluminum cast block and 1" sized. They perform with 24V DC standard voltage as standard. Air tank is produced conforming to compressed container technique and adequate to store the air between two valves.



### ● CONTROL PANEL & dP SEQUENCER

The panel containing thermal switch controlling ventilator engine, contactor, engine protection relay, working/warning lights, emergency stop button and fan start/stop button. dP controlled sequencer is integrated to the control panel



### ● INTEGRATED SILENCER BOX

Specially designed silencer box reduces noise of ECO series dust collector and make them run super silent.

### ● CARTRIDGE FILTER

80% Cellulose 20% Polyester blend media with nanofiber coated cartridge filters (F9 Class) are used as standard in ECO series. Thanks to the special PLEAT-LOCK pleating technique, pleat spacing is always equal.

(For more details page 4)



### ● COMPRESSED AIR REGULATOR

It regulates the pressure of the compressed air coming from compressor and ensures it has been forwarded to air tank as dry, thus the filter cleaning pressure is kept under control and safety of filters is guaranteed.



### ● DUST BIN

Dust bin accumulate the dust filtered by cartridge filters. Bomaksan branded dust bins are easy to plug and remove thanks to their brand new fitting equipment. Also ECO series dust collectors contains dust bin ramp as standard to remove the dust bin more easily.



### ● INTEGRATED SPARK ARRESTOR

Integrated spark arrestors are designed to capture risky sparks and reduce fire risk of dust collector.

## OPTIONAL ACCESSORIES

### ● LED BAR

Special design led bar in Bomaksan brand ECO series Jet-Pulse Cartridge Filter Units shows 3 colors for running/stopping and faults. The led bar, which gives the unit a stylish appearance, is also designed to attract the attention of the operator.



### ● 7" LCD TOUCHSCREEN PANEL

7" LCD touch panel is PLC controlled and allows easy operation of many operations and monitoring of sensors on the device. It provides fast adaptation to industry 4.0 platforms thanks to its wide range communication protocols.



## EX-PROOF ACCESSORIES

### ● EXPLOSION VENT

ATEX certificated, stainless steel explosion vents are selected with required calculations



### ● PILOT BOX and EX-PROOF COILS

Remote box keep electrical equipments of pulse valves out from explosive and dangerous areas. It also prevents electronic equipments from harsh environment.



### ● EX-PROOF FAN & MOTOR

ATEX certificated ex-proof motor and fan are used, which are suitable for different capacity requirements





According to DIN EN 60335-2-69 standards, in 0,5 - 2  $\mu$  sized M-Class particles it has a filter efficiency up to 99%.



Easy filter replacement from clean air side without facing any contaminated air.



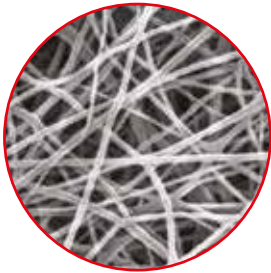
It provides extended use without losing filtration efficiency.

In Bomaksan branded ECO series jet-pulse dust collector, highly efficient nanofiber coated, flame retardant, 80/20 cellulose/synthetic, F9 filter media is used as standard. With its' superior PLEAT-LOCK pleating technique it's guaranteed the pleating sizes have been equal and better filter cleaning is ensured. Due to its' plate design, it can be assembled and disassembled easily.

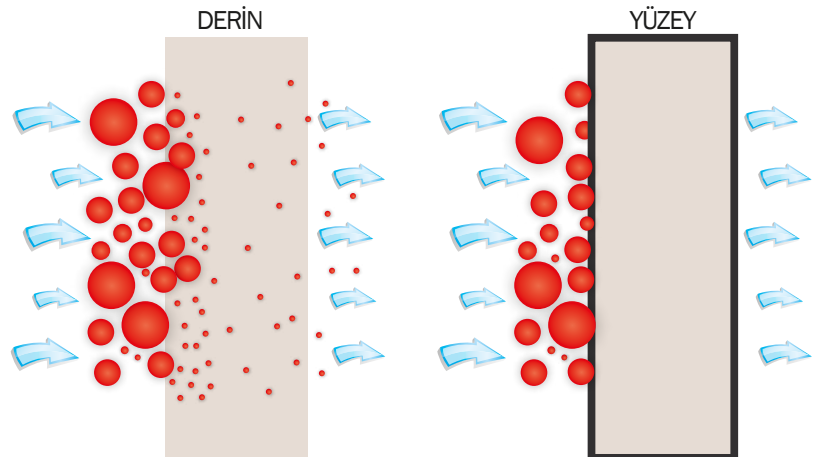
Bomaksan engineers offer the most suitable filter material for all applications and dust types. Some filter materials considering factors such as density of dust, humidity proportion, if the dust has a potential to be loaded statically and so on are as follows;

- polyMIGHT 55: %100 spunbond non-woven polyester
- polyMIGHT HO 55: Hydrophobic coating over polyMIGHT 55
- polyMIGHT ALU: Aluminium coating over polyMIGHT 55 (Antistatic)
- polyMIGHT PTFE 65: ePTFE membrane over polyMIGHT 55 (H13 efficiency)
- polyMIGHT ALU PTFE: ePTFE membrane over polyMIGHT ALU (Antistatic)
- nanoBLEND FR: %80 Cellulose %20 Polyester blend with nanofiber coating

## SURFACE FILTRATION



On the contrary to traditional filters, filters made by non-woven polyester performs the filtration not in the filter but on the surface. Therefore;



- The penetration of dust inside the filter is prevented and filter life is extended
- Less differential pressure is produced and required compressed air consumption for cleaning process is decreased
- Higher filtration efficiency is provided



## INDUSTRY 4.0 - QUICK CONNECTION OPTIONS

Bomaksan brand ECO Series Jet-Pulse Compact Cartridge Filter units are optionally equipped with a special control unit, which provides fast integration to industry 4.0 platforms. Thanks to their special software and hardware, these controllers can be connected directly to industry 4.0 platforms without the need for an extra gateway device.



## EASY CONNECTION TO PREDICTIVE MAINTENANCE SOFTWARES

Sensors on the Bomaksan filter units and the new generation control panel are designed to connect quickly to 3rd party software and hardware. In this way, even if you do not purchase Bomaksan B-Cloud service, you can provide fast integration to your own industry 4.0 application.



## BOMAKSAN CLOUD PLATFORM: B-CLOUD

You can either quickly connect Bomaksan devices to your own industry 4.0 platform or use Bomaksan's advanced cloud platform; B-Cloud. You will have following privileges by being a part of B-Cloud service;



### Be a part of BIG DATA

All devices that purchase Bomaksan B-Cloud service collect their data on the same platform. In this way, the data of your units are processed together with the data of all devices connected to Bomaksan B-Cloud service.



### Get the whole experience on the first run

The devices connected to Bomaksan B-Cloud system contain the experiences of other machines from the moment they first work. In this way, the most efficient working conditions will be achieved the first run.



### Feel the Power of Continuous Improvement

Data from devices connected to the Bomaksan B-Cloud system provide information on performance improvements. This information is used to improve the performance of all the devices connected to the Bomaksan B-Cloud service.



# **bomaksan**<sup>®</sup>

INDUSTRIAL AIR FILTRATION SYSTEMS



**RELIABLE • SUSTAINABLE • EXPERIENCED • GLOBAL • QUALIFIED**

Authorized Reseller



Due to improvement on products, Bomaksan reserves the right to change or modify all information taking place in this brochure at any time without any prior notice

**Web:** [www.bomaksan.com](http://www.bomaksan.com)  
**Mail:** [export@bomaksan.com](mailto:export@bomaksan.com)